

Displaying and Comparing Quantitative Data

- Topic: Shape of Distributions
- Objective: Students will be able to identify data displayed in a variety of displays including box and whisker plots, dot plots, and histograms.
- Standards: AP Stats: UNC-1 (EU), UNC-1.H (LO), UNC-1.H.3 (EK)
- CCSS Math: 6.SP.A.2



Shapes of Distributions

- Vocabulary:

1. **Symmetrical** Same on both sides

Ex. triangles (equilateral, isosceles)

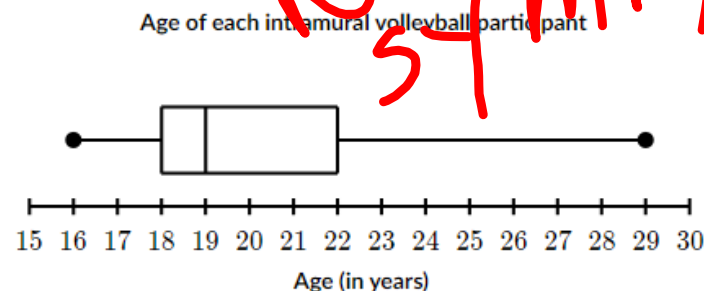
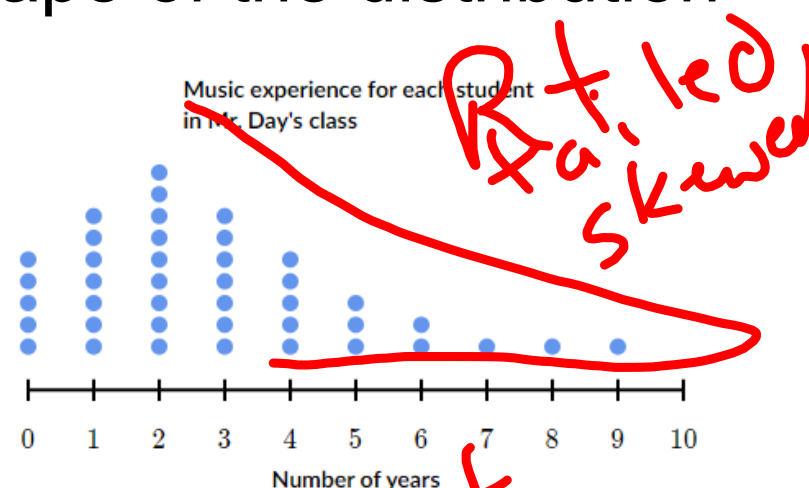
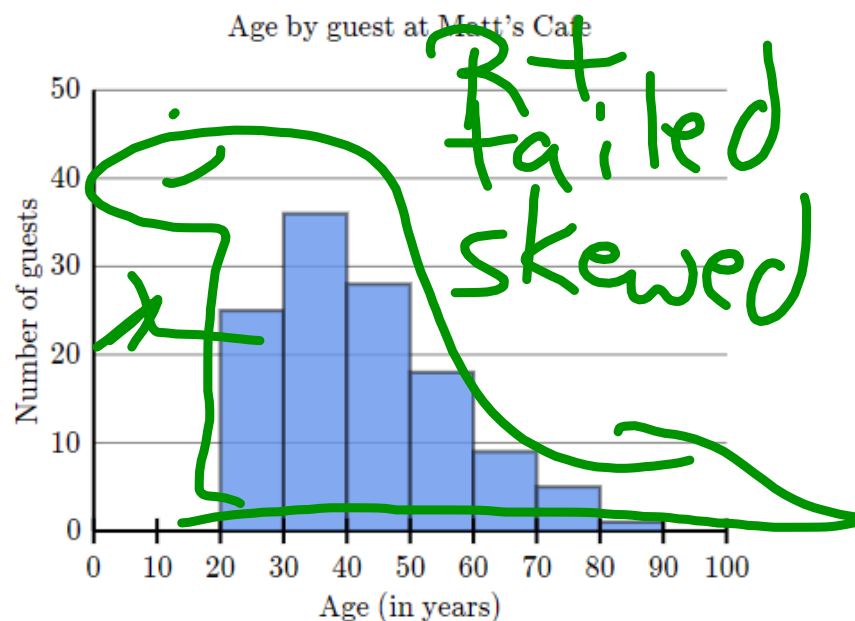
Butterfly

2. **Skewed (or tailed)**

Not even on both
sides

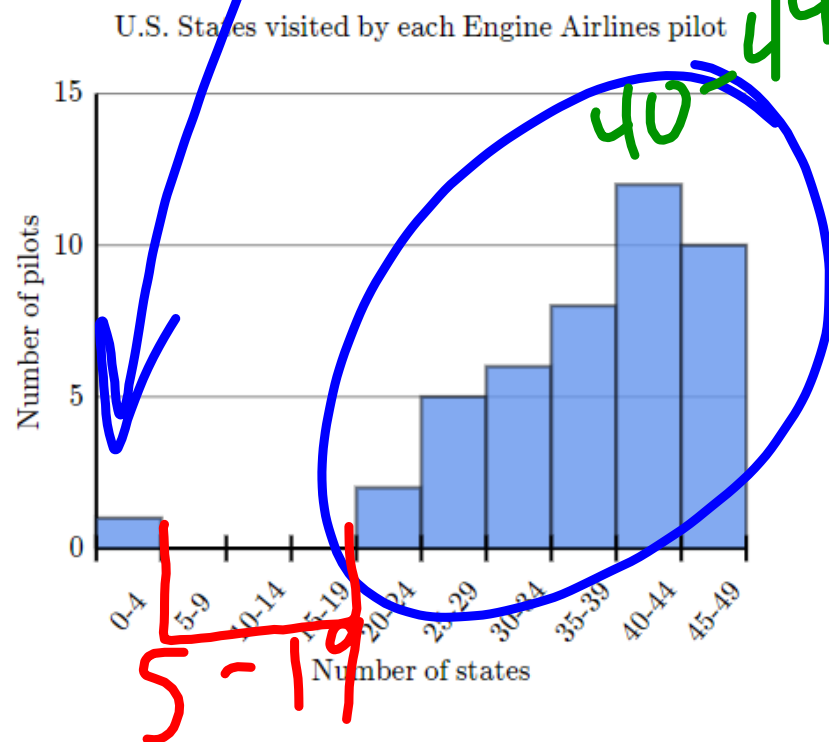
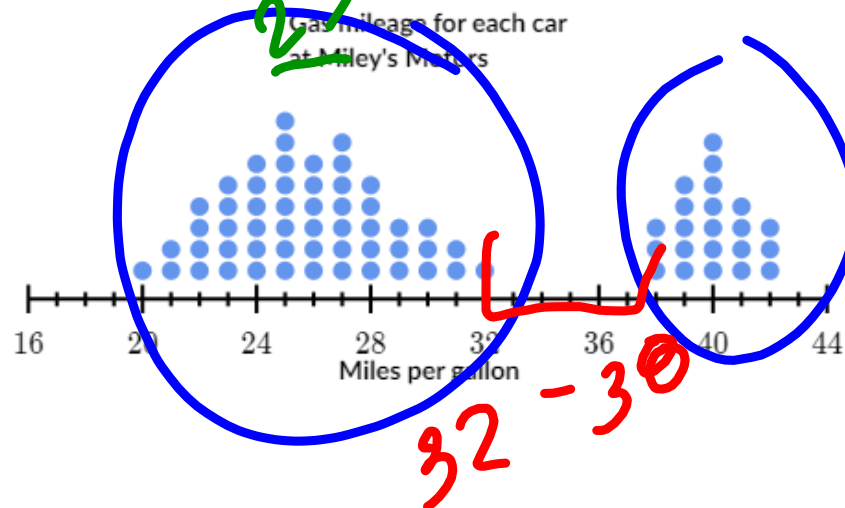
Shape of Distributions

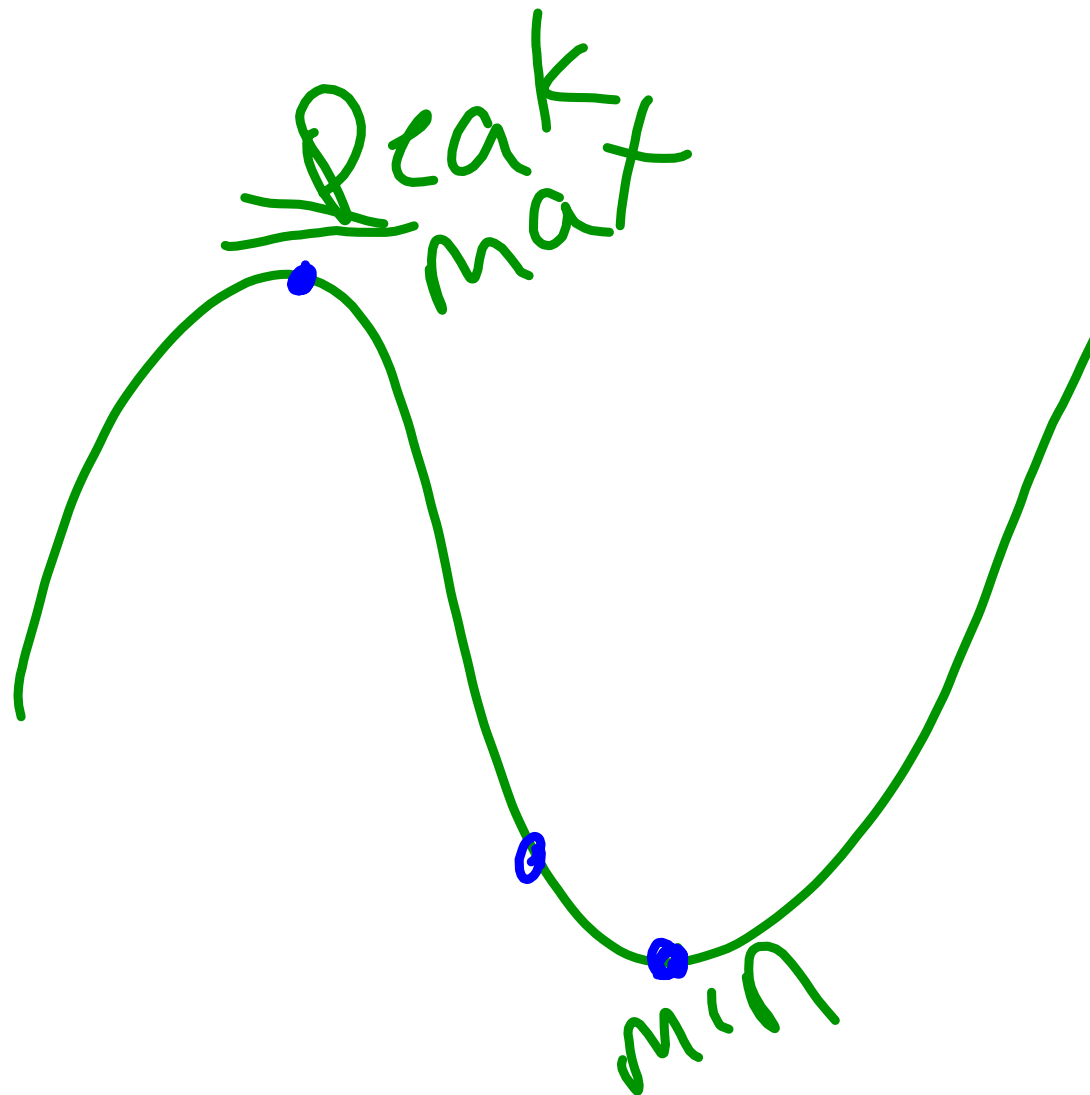
- Examples: What is the shape of the distribution shown below?



Clusters, Gaps, Peaks, and Outliers

- Examples: Which of the following are accurate descriptions of the distribution below?





Displaying and Comparing Quantitative Data

You should be working on the following skills:

1. Shape of distributions
2. Clusters, gaps, peaks, and outliers
3. Comparing distributions
4. Comparing data displays
5. Comparing data distributions
6. Comparing center and spread

ATTENTION: Log In Through CLEVER Now

Spirit Week is This Week, extra credit for
anyone who participates!